

**LEXINGTON CHRISTIAN ACADEMY**

**FAITH • SERVICE • EXCELLENCE**

**NEW PARENT TRAINING**



**LEXINGTON CHRISTIAN  
ACADEMY**

## **AGENDA**

- Welcome, Introductions and Prayer – Lesley Sizemore-Hardin, Director of Admissions
- Spiritual Life at LCA – Lisa Bacon, Assistant Head of School and Campus Spiritual Life Directors
- Communication Tools – Lisa Collins, Communications & Digital Content Manager
- Ordering Lunch – Amanda Curry, Elementary Lunch Coordinator
- Philanthropy at LCA – Jill Barnett, Director of Development
- Employment, Volunteer Opportunities, Tuition Programs – Morgan Wilson, Director of HR & Finance

**FAITH • SERVICE • EXCELLENCE**



LEXINGTON CHRISTIAN  
ACADEMY

## AGENDA

- Parent-Student Handbook Review
  - Dr. Cassondra Koett and Keith Galloway – High School
  - Coleman Marshall and Lea Clark – 6th Grade Academy & Junior High
  - Thad Highbaugh, Emily Lavender-Hawk, Beth Potter, Annie Furnish, Leslie Whitaker – Preschool & Elementary

FAITH • SERVICE • EXCELLENCE



LEXINGTON CHRISTIAN  
ACADEMY

## SPIRITUAL LIFE

- Covenant School
  - In biblical terms, a [covenant](#) is a binding agreement that defines a commitment or obligation between two parties.
  - A [covenant school](#) seeks to bind families and the organization together through a common pledge to educate all students within the school system and at home through the lens of a biblical worldview.
  - At LCA, we require at least one parent to be a professing Christian, be active in a local church, and agreeing with the school's Mission Statement, Core Values, and Statement of Faith.
  - We also ask that each Junior High and High School student has a desire to attend LCA and agrees to abide by our Mission Statement, Core Values, and Statement of Faith.

FAITH • SERVICE • EXCELLENCE



LEXINGTON CHRISTIAN  
ACADEMY

## SPIRITUAL LIFE

- LCA has an incredible mission of *nurturing and equipping students to fulfill God's calling on their lives through Christ-centered education.*
- As a covenant school, we know that what is taught in the classroom is being reinforced at home, at church, and in the overall LCA community.
- Our focus on Christ is reinforced through a biblically integrated curriculum, daily Bible classes, weekly chapel programs, and service opportunities.

FAITH • SERVICE • EXCELLENCE



LEXINGTON CHRISTIAN  
ACADEMY

## BIBLICALLY INTEGRATED CURRICULUM

Biblically integrated instruction is the process of instructional planning and teaching where students **think** through the subject matter and skills to **connect** and **compare** all knowledge to a biblical worldview.

FAITH • SERVICE • EXCELLENCE



LEXINGTON CHRISTIAN  
ACADEMY

## BIBLICALLY INTEGRATED CURRICULUM

How is this accomplished?

Integration is NOT pressing Truth into something secular.

Rather, because of sin, things have been disintegrated and we are putting back together what has been marred by sin.

Biblical worldview integration is what makes us distinctive. Each unit is carefully planned to align with a biblical worldview and integration of Truth.

FAITH • SERVICE • EXCELLENCE



LEXINGTON CHRISTIAN  
ACADEMY

## MATTHEW 18 PRINCIPLE

“If your brother or sister sins, go and point out their fault, just between the two of you. If they listen to you, you have won them over. But if they will not listen, take one or two others along, so that ‘every matter may be established by the testimony of two or three witnesses.’ If they still refuse to listen, tell it to the church; and if they refuse to listen even to the church, treat them as you would a pagan or a tax collector.”

FAITH • SERVICE • EXCELLENCE



LEXINGTON CHRISTIAN  
ACADEMY

## OVERVIEW OF CHAPELS & SERVICE OPPORTUNITIES

- Elementary School – Zac Barnhart, Elementary Spiritual Life Director
- 6<sup>th</sup> Grade Academy & Junior High – Joel Simpson, Spiritual Life Director
- High School – Jackie Payne, Spiritual Life Leader

FAITH • SERVICE • EXCELLENCE



LEXINGTON CHRISTIAN  
ACADEMY

## SPIRITUAL LIFE

- Chapel
- Quarterly Service Projects
- Spiritual Emphasis Week – September 9th-13th
- Service Emphasis Week – Second Semester
- 5th Grade Leadership Projects



FAITH • SERVICE • EXCELLENCE



LEXINGTON CHRISTIAN  
ACADEMY

## PRESCHOOL – FIRST GRADE CHAPEL

### Rebekah Straub - Chef Sprinkles

- Weekly Chapel is a **PRIORITY**.
- Chapel directly aligns with Bible curriculum
- Closed Facebook Groups
- Curriculum-related Family Discipleship Guides



FAITH • SERVICE • EXCELLENCE

- Parent Discipleship Opportunities




LEXINGTON CHRISTIAN  
ACADEMY

## ROLE OF PARENTS AS SPIRITUAL LEADERS IN THE HOME


- Prayer – Jackie Payne, High School Spiritual Life Leader
- Church – Zac Barnhart, Elementary Spiritual Life Director
- Service – Joel Simpson, 6<sup>th</sup> Grade Academy & Junior High Spiritual Life Director
- Parent Education - Lesley Sizemore-Hardin, Director of Admissions

FAITH • SERVICE • EXCELLENCE



**LEXINGTON CHRISTIAN  
ACADEMY**

## PARENT EDUCATI ON




Fall Schedule

**AUGUST 29 at 12PM**  
KINGDOM EDUCATION - THE ROLE OF PARENTS, THE CHURCH & THE SCHOOL

**SEPTEMBER 19 at 6:30PM**  
DEALING WITH ANXIETY - PERFORMANCE, RELATIONSHIPS & SELF-WORTH

**OCTOBER 17 at 6:30PM**  
ALCOHOL, DRUGS & SOCIAL MEDIA - POTENTIAL DANGERS EVERY PARENT SHOULD KNOW

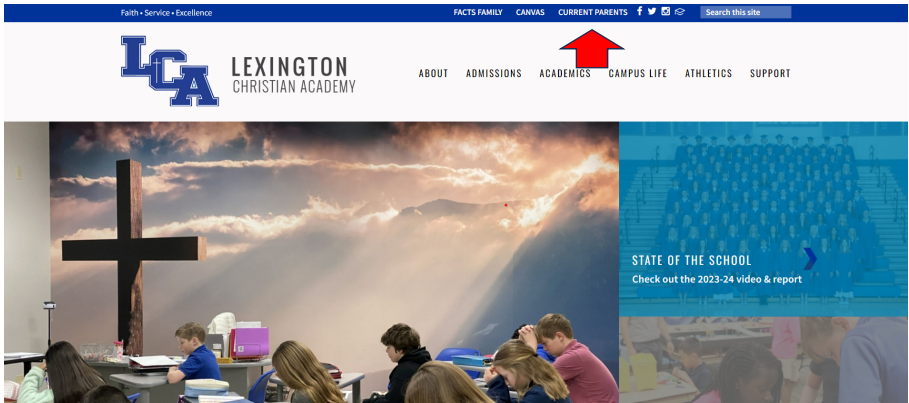
**NOVEMBER 14 at 12PM**  
TACKLING SENSITIVE TOPICS THROUGH A BIBLICAL LENS - BULLYING, RACISM & IDENTITY ISSUES



**LEXINGTON CHRISTIAN  
ACADEMY**

## COMMUNICATION TOOLS

- Website (Current Parent Resources webpage)




**FAITH • SERVICE • EXCELLENCE**



LEXINGTON CHRISTIAN  
ACADEMY

## COMMUNICATION TOOLS

- Wingspan
  - Emailed every Thursday around 2:30 p.
  - Can also opt-in to receive it by te 
- Social Media
  - Facebook - LexingtonChristianAcademy
  - Instagram - lca\_ky\_eagles
  - Twitter - LCAKYEagles
  - LinkedIn – Lexington-Christian-Academy



FAITH • SERVICE • EXCELLENCE



LEXINGTON CHRISTIAN  
ACADEMY

## COMMUNICATION TOOLS

### School App

Your one stop place to:

1. Order lunches
2. Check grades
3. Add funds to Eagle accounts (6th-12th)
4. View announcements
5. Read *Wingspan*
6. Plus, so much more!



### DOWNLOAD OUR APP!

Available for both Apple and Android devices.



Your one stop place to:

1. Order lunches
2. Check grades
3. Add funds to Eagle accounts
4. View announcements
5. Read the weekly newsletter
6. Plus so much more!

Search for Lexington Christian Academy\_KY in the app store or use the QR code below to download.

Use the QR code to download the FREE LCA app.



Thank you to our app sponsor  
WHITE • GREER • MAGGARD  
ORTHODONTICS

FAITH • SERVICE • EXCELLENCE





LEXINGTON CHRISTIAN  
ACADEMY

## SCHOOL SYSTEMS

- FACTS SIS
  - Ordering Lunch
  - Accessing Grades
  - Changing Account Information
- Canvas
  - Tutorial
- **Naviance – High School only**

FAITH • SERVICE • EXCELLENCE



LEXINGTON CHRISTIAN  
ACADEMY

## Lunch – Amanda Curry

- LCA partners with several local vendors and business partners to provide hot lunch options to all students and staff each day.
- Lunch orders are opened in the FACTS app on Sunday and lunch can be ordered for the entire week.
- If your student will be absent, your lunch order will need to be removed by:
  - 8:00 am for Elementary
  - 8:30 am for JH-High School
- Junior High and High School families can add funds to their students Eagle card to purchase grab and go items outside of normal lunch ordering process.

FAITH • SERVICE • EXCELLENCE

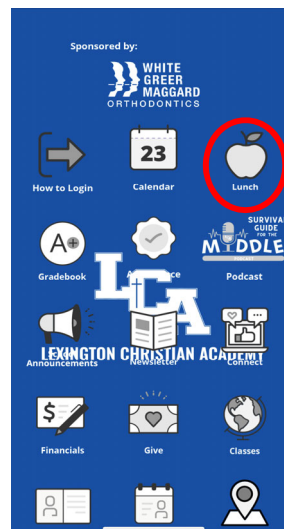


LEXINGTON CHRISTIAN  
ACADEMY

## Lunch – Amanda Curry

### Lunch Order Instructions

Open app and select the **Lunch** icon.



FAITH • SERVICE • EXCELLENCE

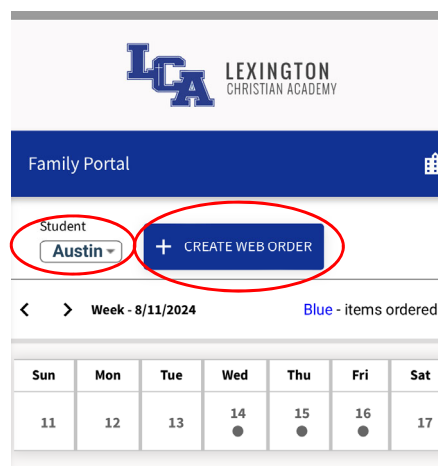


LEXINGTON CHRISTIAN  
ACADEMY

## Lunch – Amanda Curry

### Lunch Order Instructions Cont...

- Select the **Student** you want to place and order (TK-5th only).
- Next, select **Create Web Order**.



FAITH • SERVICE • EXCELLENCE



LEXINGTON CHRISTIAN  
ACADEMY

## Lunch – Amanda Curry

### Lunch Order Instructions Cont...

- All the food options for that week will appear.
- Find the day that you want to order and scroll to the side to add the quantity you want to order.
- You can place your orders starting on Sunday. It is best practice to go ahead and place all orders for the whole week.
- Any item labeled add on is for the singular item only. It will not come a side and drink.
- All meals come with a drink. You have the option to add an additional drink.

FAITH • SERVICE • EXCELLENCE



LEXINGTON CHRISTIAN  
ACADEMY

## Lunch – Amanda Curry

### Lunch Order Instructions Cont...

- After you select your quantities, scroll to the end of the menu and select **Order Items**. Your lunch order will not be saved until you select this button.

FAITH • SERVICE • EXCELLENCE



LEXINGTON CHRISTIAN  
ACADEMY

## Lunch – Amanda Curry

### Lunch Order Instructions Cont...

- To check your order, click on each day on the calendar.
- **Everything you've ordered will be highlighted in blue**
- Use this same process to make a change to an existing order. Change the quantity of items ordered and select Order Items to save.

FAITH • SERVICE • EXCELLENCE



LEXINGTON CHRISTIAN  
ACADEMY

## Lunch Contacts

- [ACurry@lexingtonchristian.org](mailto:ACurry@lexingtonchristian.org) - Elementary
- [MBard@lexingtonchristian.org](mailto:MBard@lexingtonchristian.org) - 6th Grade Academy, Junior High and High School

FAITH • SERVICE • EXCELLENCE



LEXINGTON CHRISTIAN  
ACADEMY

## PHILANTHROPY AT LCA

- Overview
- Ways to Give
  - LCA Annual Fund
  - Business Partnerships
  - Celebrate Teachers
  - Eagle Gala
- Ways to Serve

FAITH • SERVICE • EXCELLENCE



LEXINGTON CHRISTIAN  
ACADEMY

## EMPLOYMENT & VOLUNTEER OPORTUNITIES

- Volunteer Opportunities
- Employment Opportunities
- Applications – Faculty, Staff, Substitute, and Volunteer

FAITH • SERVICE • EXCELLENCE



LEXINGTON CHRISTIAN  
ACADEMY

## TUITION & FINANCIAL POLICIES

### Fees and Tuition Breakdown

- Tuition payment plans consist of one-time payment in full, semester payments (August and December), 10 payments (August-May), or 12 payments (June-May)
- Annual enrollment fee of \$350 illustrates a family's financial commitment to the school and allows administration to reserve a seat for your student each year. This is charged in February if the family does not opt out of continuous enrollment
- Non-refundable grade-level fees are fees that cover the cost of consumable expenses and/or special programs such as class parties and field trips. Half of this fee is included in August tuition and the other half in December.

FAITH • SERVICE • EXCELLENCE



LEXINGTON CHRISTIAN  
ACADEMY

## TUITION ASSISTANCE PROGRAM

- LCA offers tuition assistance (TA) to families based on a demonstrated need for aid. Demonstrated need is the difference between the school's tuition and the amount a family can reasonably afford to pay toward tuition.
  - LCA families and employees may apply for TA for students in grades TK-12.
  - The TA application process must be completed for each student for each year for which assistance is requested.
  - The award amount is based on an analysis done by an independent third party as selected by the school and based on available funds.
  - The TA Committee reviews all qualified applicants and determines specific awards consistent with the approved budget.
- If you are interested in applying for TA or have any additional questions, please reach out to Jenny Newman, [jnewman@lexingtonchristian.org](mailto:jnewman@lexingtonchristian.org)

FAITH • SERVICE • EXCELLENCE



LEXINGTON CHRISTIAN  
ACADEMY

## RaiseRight (formerly E-Tip)

RaiseRight ( Formerly E-Tip) is a program set up for current LCA families to accumulate credit towards their tuition obligation.

- Families purchase prepaid gift cards from local and national retailers
- Your purchase and tuition credit earned will be accumulated from January 1 - December 31 and the credit is applied towards the February tuition of the current school year.
- Cost to participate is 3% but not exceeding \$50
- Example Retailers: Culvers, Meijer, Target, BHG, Starbucks

For more information please visit: [www.raiseright.com](http://www.raiseright.com) or reach out to Helen Proffitt at [hproffitt@lexingtonchristian.org](mailto:hproffitt@lexingtonchristian.org)

FAITH • SERVICE • EXCELLENCE



LEXINGTON CHRISTIAN  
ACADEMY

## RaiseRight (formerly E-Tip)

Get started by downloading the [RaiseRight™ app](#) on your phone or go to [RaiseRight.com](http://RaiseRight.com) on your computer.

For step-by-step instructions, visit [RaiseRight.com/m/StartEarning](http://RaiseRight.com/m/StartEarning).

**Register online using LCA's enrollment code 88BB36E12L311**

**Questions? Contact Helen Proffitt at [hproffitt@lexingtonchristian.org](mailto:hproffitt@lexingtonchristian.org).**



The merchants represented are not sponsors or otherwise affiliated with RaiseRight™. The logos and other identifying marks used are trademarks of and owned by each represented company and/or its affiliates. Please visit the company's website for additional terms and conditions. © 2023 RaiseRight

FAITH • SERVICE • EXCELLENCE



LEXINGTON CHRISTIAN  
ACADEMY

## PARENT-STUDENT HANDBOOK OVERVIEW

- Preschool & Elementary – Thad Highbaugh, Principal
- 6<sup>th</sup> Grade Academy & Junior High – Coleman Marshall, Principal
- High School – Dr. Cassondra Koett, Principal

FAITH • SERVICE • EXCELLENCE



LEXINGTON CHRISTIAN  
ACADEMY

# WELCOME

## 2024-2025 Elementary Leadership Team



**Beth Potter**  
Preschool Director



**Annie Furnish**  
Guidance Counselor



**Thad Highbaugh**  
Principal



**Emily Hawk**  
Assistant Principal



**Zac Barnhart**  
Spiritual Life  
Director

FAITH • SERVICE • EXCELLENCE





LEXINGTON CHRISTIAN  
ACADEMY

## IBC - DAILY SCHOOL LIFE

- **Arrival – 7:30-8:00am**
- **Dismissal – 2:45-3:10pm**
- **Attendance/Absences**
  - Sick, Planned, Extended, Truancy
  - Early Pickup
  - Tardies
- **Makeup Work & Tests**
- **Ignite – Extended Care**

FAITH • SERVICE • EXCELLENCE



LEXINGTON CHRISTIAN  
ACADEMY

## IBC - DAILY SCHOOL LIFE

- **Parent Involvement**
  - Chapel, Lunch, PTF, Events, Readers, Field Trips
  - Background Checks
- **Dress Code**
  - Student Examples
  - Hair
  - Spirit Days
- **ROCK Expectations**

FAITH • SERVICE • EXCELLENCE



LEXINGTON CHRISTIAN  
ACADEMY

## Elementary Life

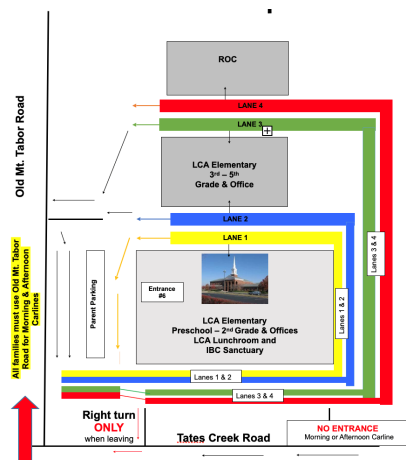
- **Communication**
  - Matthew 18
    - All questions or concerns regarding a teacher should be brought to the teacher first.
    - If you continue to have questions/concerns, please follow up with our Administrative Team and the teacher to schedule a meeting.
  - Weekly Newsletters
  - Classroom Apps - Class Dojo, Remind 101, Brightwheel
  - Email
  - 24 Hours to respond

FAITH • SERVICE • EXCELLENCE



LEXINGTON CHRISTIAN  
ACADEMY

## CAR LINE



- All cars will enter the carline from Old Mt. Tabor Road.
- Parents will be given an arrival time and lane to coordinate arrival and dismissal.
- Student should follow the lane connected to the youngest student in their family for arrival.
- Students should remain in their car until an LCA staff member comes to assist them.
- For safety reasons, we ask that parents not get out of their cars to walk students into the building. Please park if additional time is needed to secure seatbelts/car seats.
- Early pickups must be communicated with the front office team and be picked up by 2:15.
- Students not picked up by 3:15 will be taken to after care.
- PS students have a separate pickup/drop-off area.

FAITH • SERVICE • EXCELLENCE



LEXINGTON CHRISTIAN  
ACADEMY

## Campus Security

- SRO – Deputy Carmichael
- Doors Locked – Secure Perimeter
- 3M Film on 1st Floor Windows
- Raptor Visitor Management System
  - Entrance 8 - Parent Entrance



FAITH • SERVICE • EXCELLENCE



LEXINGTON CHRISTIAN  
ACADEMY

## GUIDANCE

Annie Furnish

- Social/Emotional/Academic Needs
  - Accommodations
- Classroom Counseling
- Assessments (Benchmarking)
- Intervention/Speech Services - Referrals
- Student Records/Report Cards - Grades



FAITH • SERVICE • EXCELLENCE

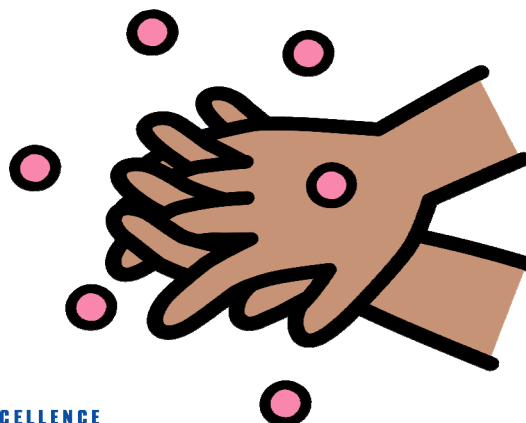


LEXINGTON CHRISTIAN  
ACADEMY

## HEALTHY AT SCHOOL

Leslie Whitaker

- Communication
- Clinic Locations
- Medical Forms
- Questions



FAITH • SERVICE • EXCELLENCE



LEXINGTON CHRISTIAN  
ACADEMY

## Preschool At A Glance

Beth Potter

- **Preschool Parent Info Night**
- **Potty Training Expectations**
- **Brightwheel - Drop Off & Pickup**
- **Milk Order Form - Preschool Lunches**

FAITH • SERVICE • EXCELLENCE



LEXINGTON CHRISTIAN  
ACADEMY

## Upcoming Events

- **Class Lists Released - August 1st**
- **PS Playground Fun - August 5th**
- **Stop, Drop & Go – August 12th @ 10-2PM**
- **Preschool Orientation Night – August 12th @ 6PM**
- **First Day of School TK-5 – August 14th**
- **Opening Chapel – August 14th @ 9AM**
- **First Day of PS – August 15th/16th**
- **Parent Information Night – August 27th and 28th**

FAITH • SERVICE • EXCELLENCE



LEXINGTON CHRISTIAN  
ACADEMY

# Questions?

- **Thank you for coming!**



FAITH • SERVICE • EXCELLENCE