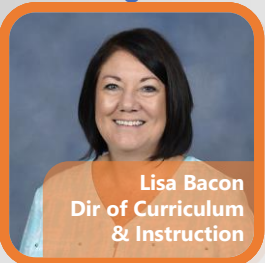


# Head of School with Direct Reports

## Lexington Christian Academy

### Head of School

- Board Liaison
- Campus Oversight
- Strategic Plan
- School Improvement
- Capital Campaign



- PS-12 Assessments
- PS-12 Curriculum
- PS-12 Professional Development
- PS-12 Student Support
- School Improvement Plans



- Athletic Budget
- Athletic Fields & Facilities
- Coaching Support & Training
- KHSAA Compliance
- Title IX Compliance



- Enrollment Management
- Internal & External Communications
- Marketing & Public Relations
- Website & Social Media



- Facilities & Grounds
- Operations
- Safety & Security
- Technology Systems & Infrastructure



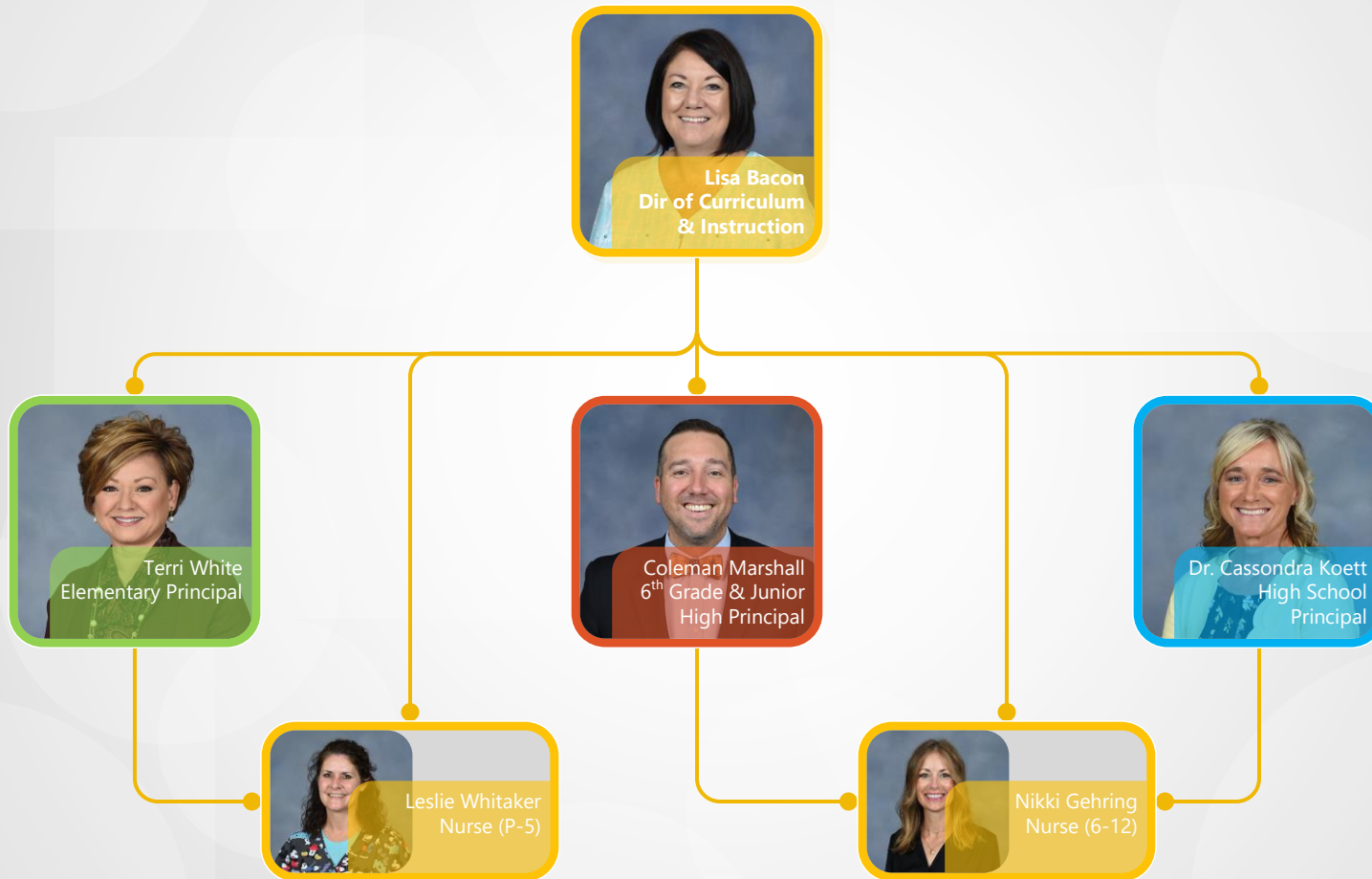
- Advancement
- Alumni Affairs
- Donor Development & Gift Cultivation
- Fund Development & Campaigns



- Budget Development & Management
- Financial Accounting
- Human Resources
- Student Billing

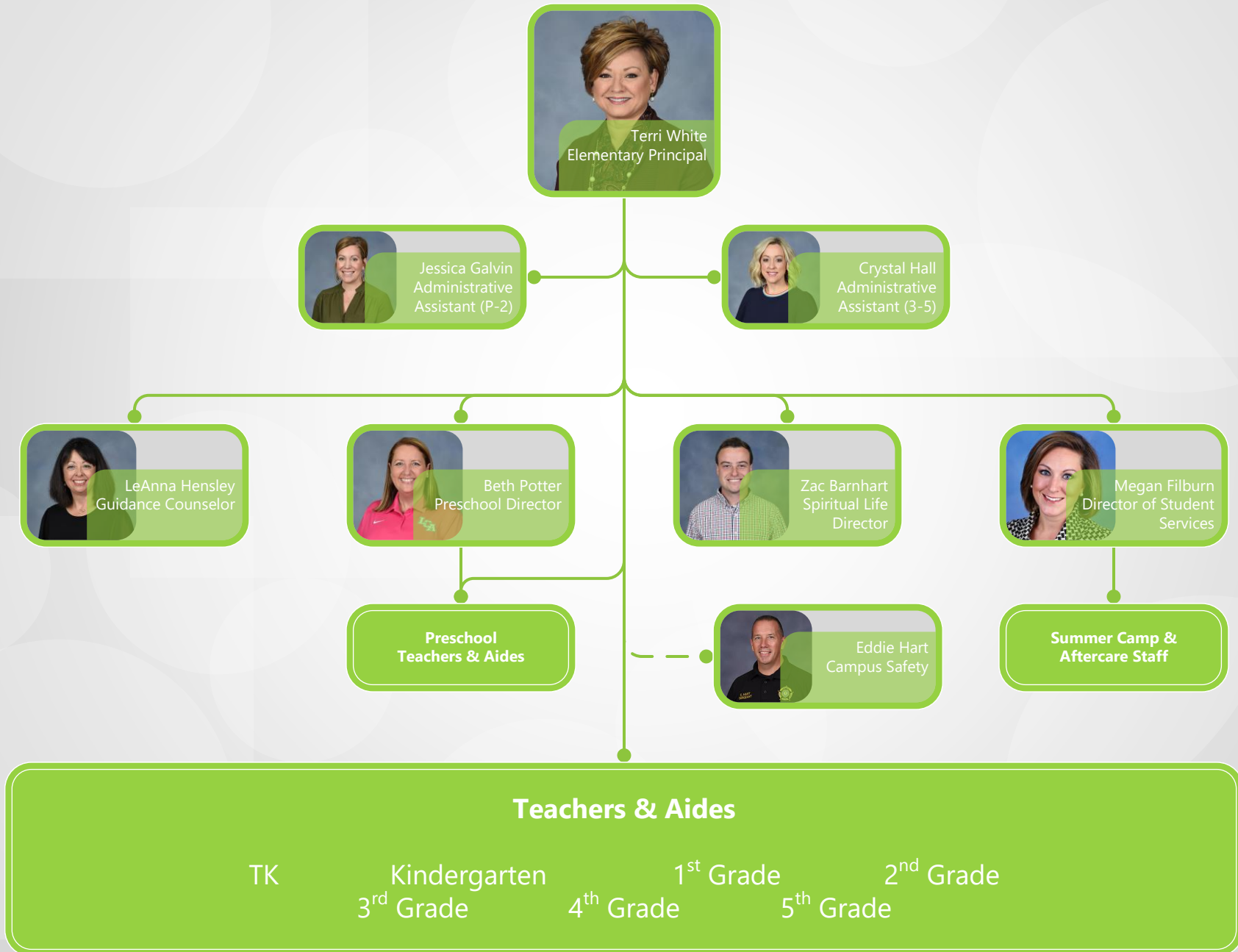
# Academics

## Lexington Christian Academy



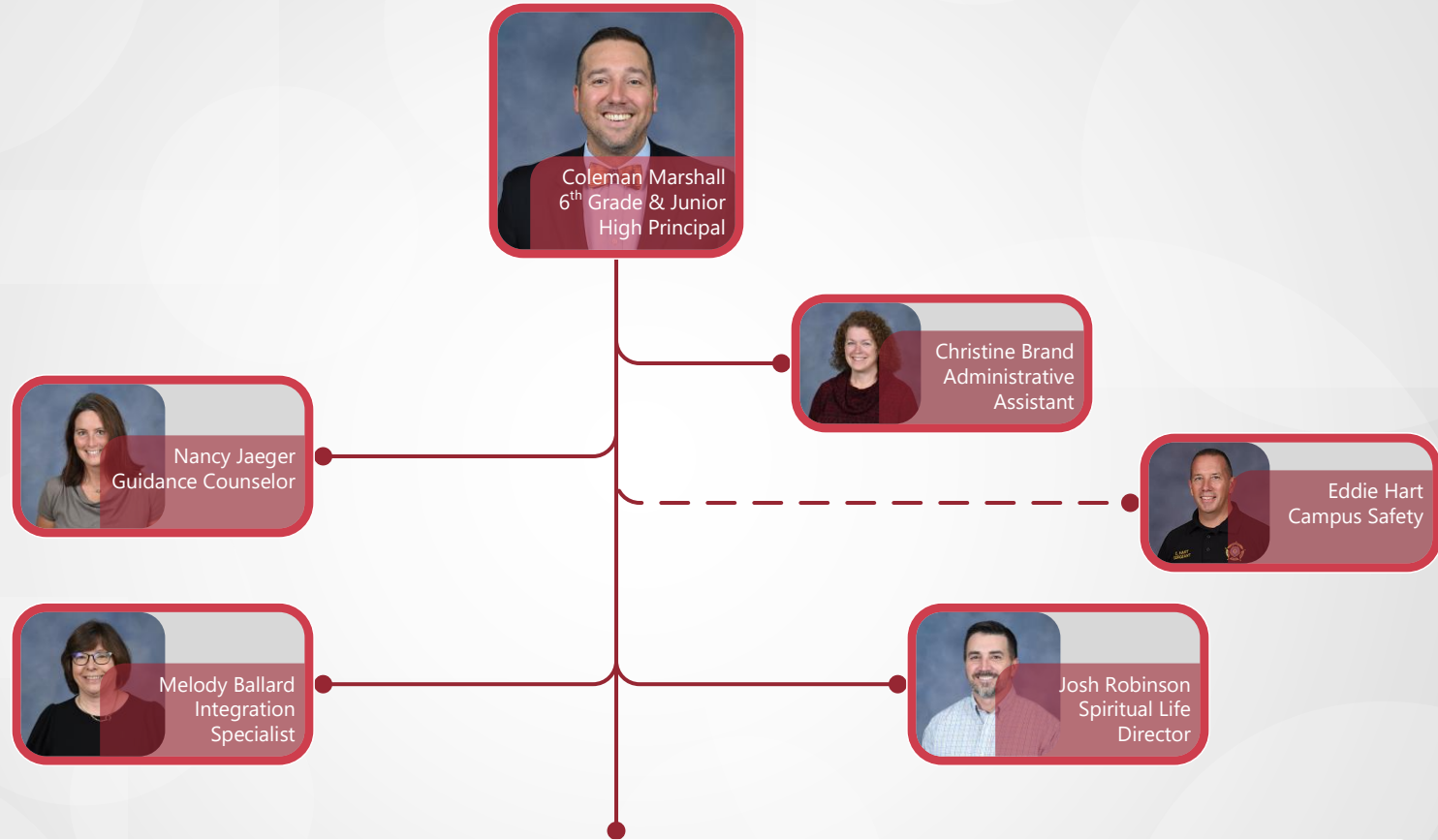
# Academic - Elementary

Lexington Christian Academy



# Academic – 6<sup>th</sup> Grade Academy & Junior High

Lexington Christian Academy



## Teachers

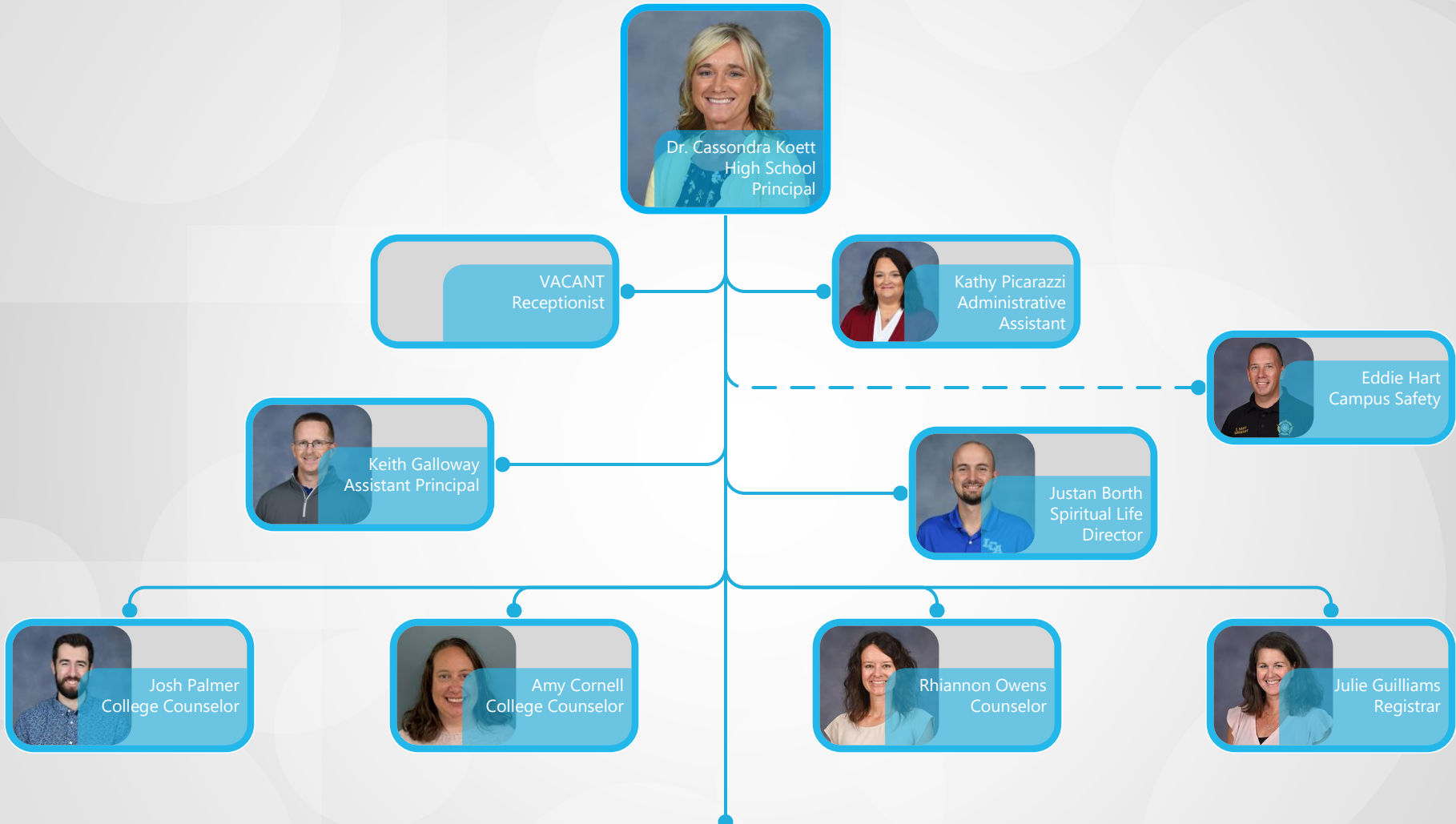
6<sup>th</sup> Grade Academy

7<sup>th</sup> Grade

8<sup>th</sup> Grade

# Academic – High School

## Lexington Christian Academy



### Teachers

9<sup>th</sup> Grade

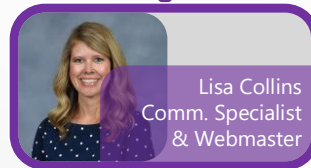
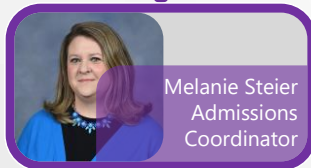
10<sup>th</sup> Grade

11<sup>th</sup> Grade

12<sup>th</sup> Grade

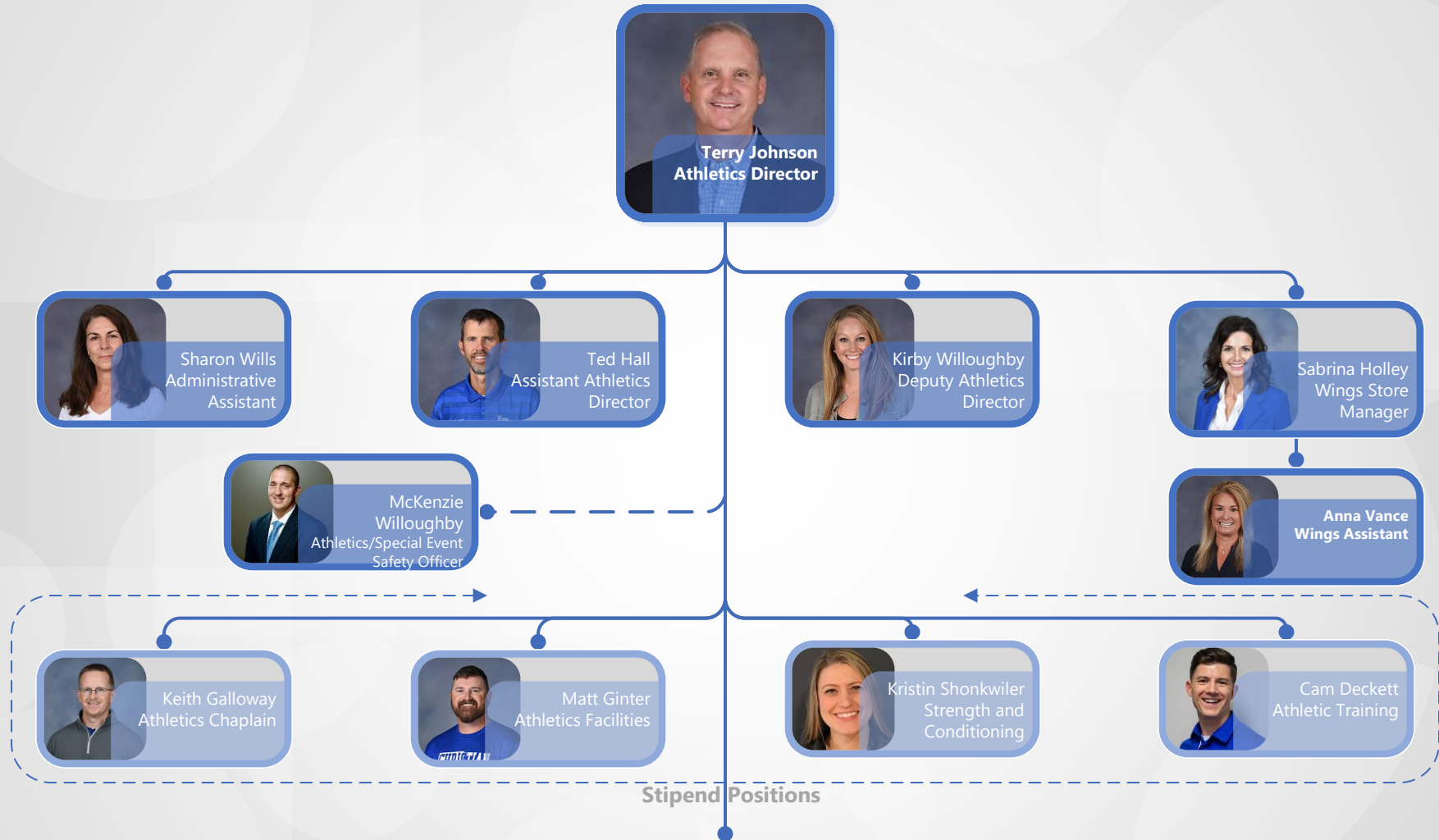
# Admissions & Marketing

Lexington Christian Academy



# Athletics

## Lexington Christian Academy



Stipend Positions

### Coaches

Archery  
Dance  
Softball

Baseball  
Football  
Swim/Dive

Basketball  
Golf  
Tennis

Cheer  
Lacrosse  
Track

Cross Country  
Soccer  
Volleyball

# Campus Operations

## Lexington Christian Academy



**Seth Robison**  
Director of Campus Operations



**Eddie Hart**  
Campus Safety

### Campus Safety Officer

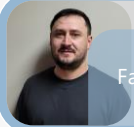
- Reports to each Principal for Campus related issues
- Notifies Head of School and Dir. of Campus Operations of all safety issues



**McKenzie Willoughby**  
Athletics/Special Event Safety Officer



**Andrey Barbashevich**  
Facilities Manager



**Andrei Onisciuc**  
Facilities Specialist



**Bud Bryant**  
Facilities Technician



**Kenny McVey**  
Grounds Supervisor



**Derrick Payne**  
Grounds Assistant



**Michael Fulton**  
Operations Manager



**Dan Klebes**  
Campus Operations Specialist



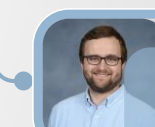
**Brian Nickel**  
Campus Operations Technician



**Kristy Nevil**  
Daytime Custodial



**Neal Hall**  
Technology Manager



**Tyler Clark**  
Technology & Media Specialist



**Daniel Barbashevich**  
Technology Technician

### Evening Custodial

Larisa Menshikova [TEAM LEAD]  
Jeri Cox  
Megan Dorsey  
Johanna Hildreth  
Keith Leach  
Svitlana (Lana) Leshko



# Development

## Lexington Christian Academy



# Finance & Human Resources

Lexington Christian Academy

