

Head of School with Direct Reports

Lexington Christian Academy

Head of School

- Board Liaison
- Campus Oversight
- Community Liaison
- Executive Leadership Team
- School Improvement
- Strategic Plan

Dr. Scott Wells
Head of School

Whitney Walls
Executive Assistant



Lisa Bacon
Asst Head of School
Dir of Curriculum & Instruction

- PS-12 Assessments
- PS-12 Curriculum
- PS-12 Professional Development
- PS-12 Student Support
- School Improvement Plans

Terry Johnson
Athletics Director

- Athletic Budget
- Athletic Fields & Facilities
- Coaching Support & Training
- KHSAA Compliance
- Title IX Compliance

Lesley Sizemore-Hardin
Dir of Admissions & Marketing

- Enrollment Management
- Internal & External Communications
- Marketing & Public Relations
- Website & Social Media

Seth Robinson
Director of Campus Operations

- Campus Safety
- Custodial
- Facilities
- Grounds
- Operations
- Technology Systems & Infrastructure

Jill Barnett
Director of Development

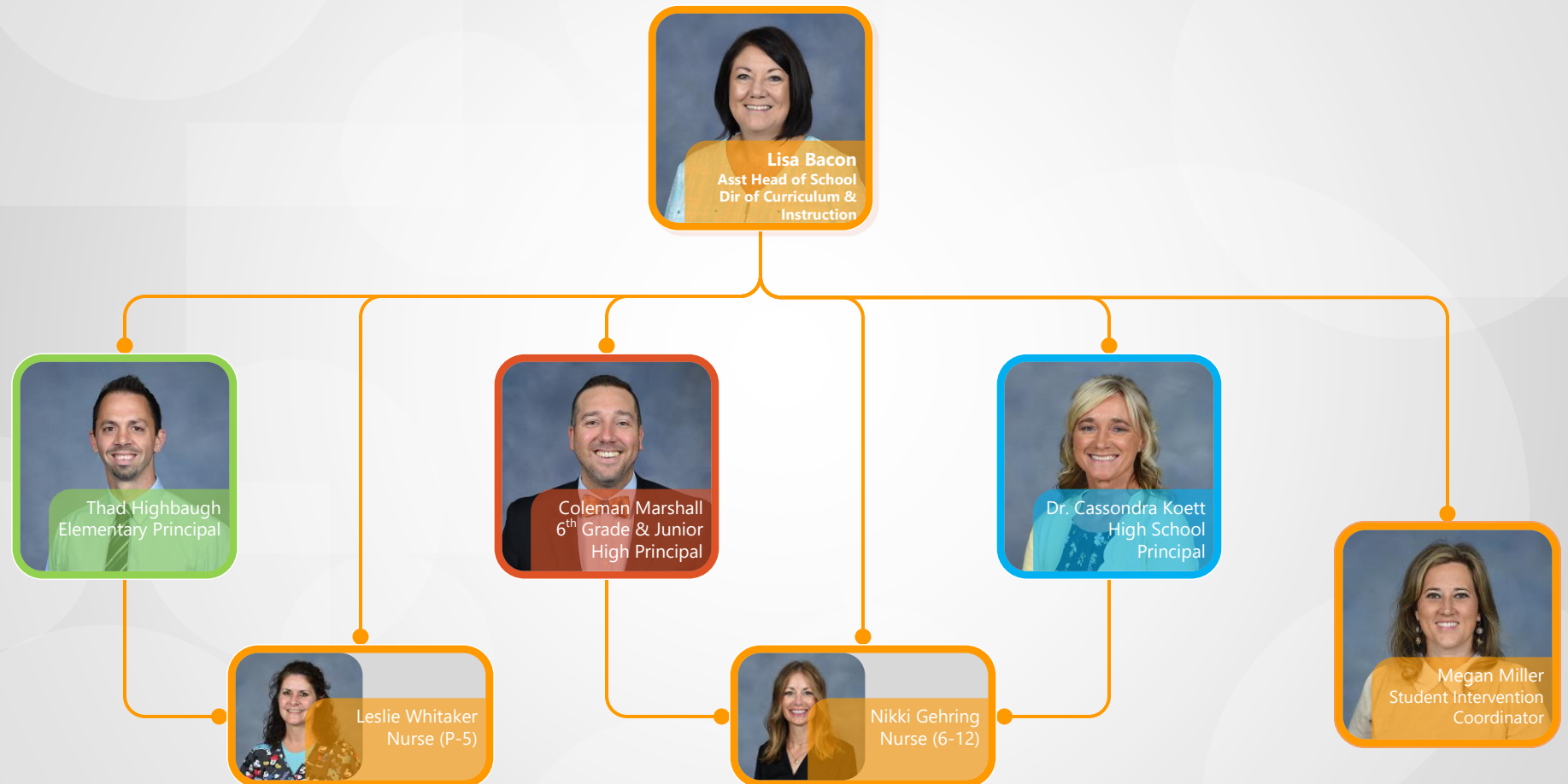
- Advancement
- Alumni Affairs
- Donor Development & Gift Cultivation
- Fund Development & Campaigns

Morgan Wilson
Director of Finance & Human Resources

- Budget Development & Management
- Financial Accounting
- Human Resources
- Student Billing

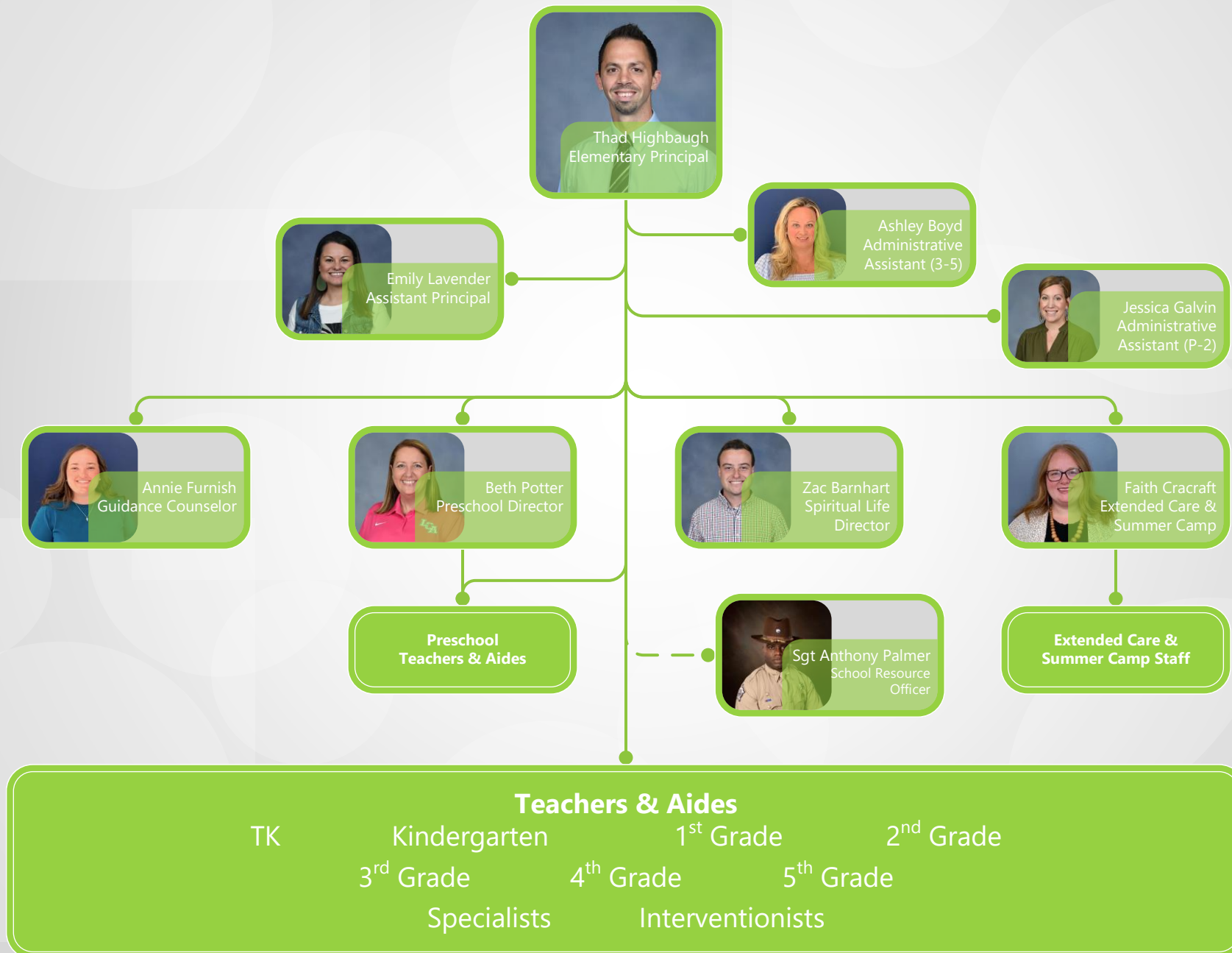
Academics

Lexington Christian Academy



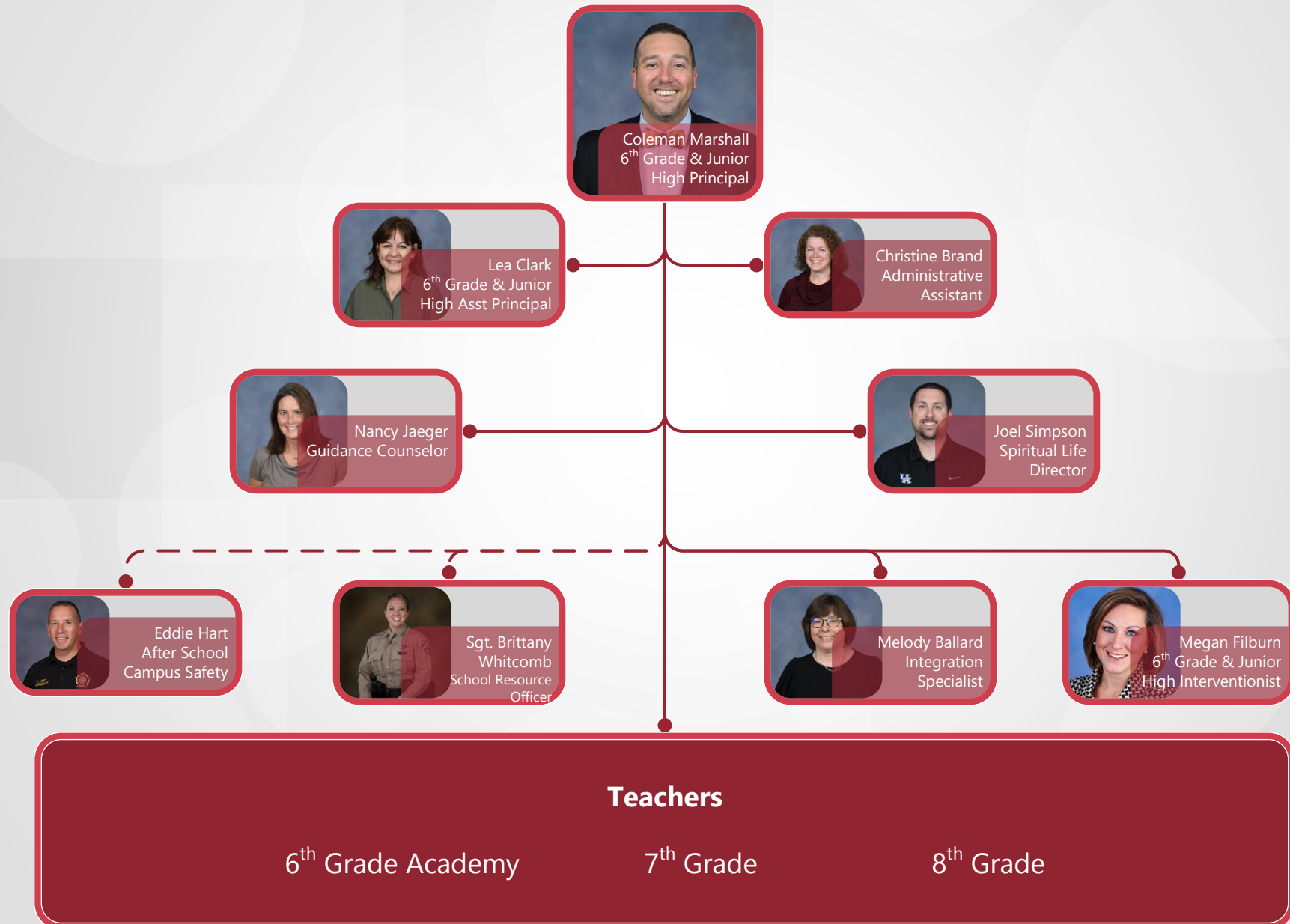
Academic - Elementary

Lexington Christian Academy



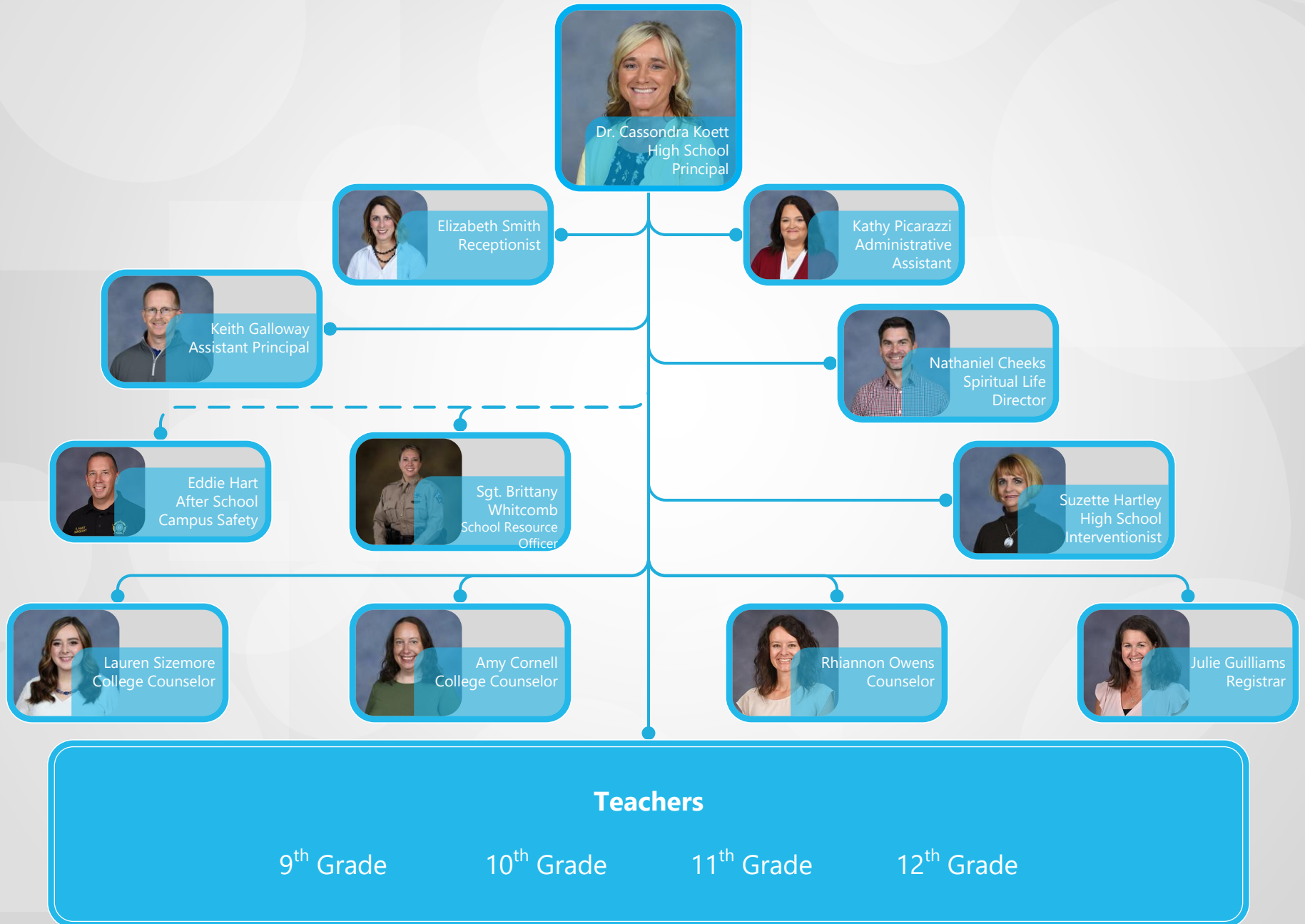
Academic – 6th Grade Academy & Junior High

Lexington Christian Academy



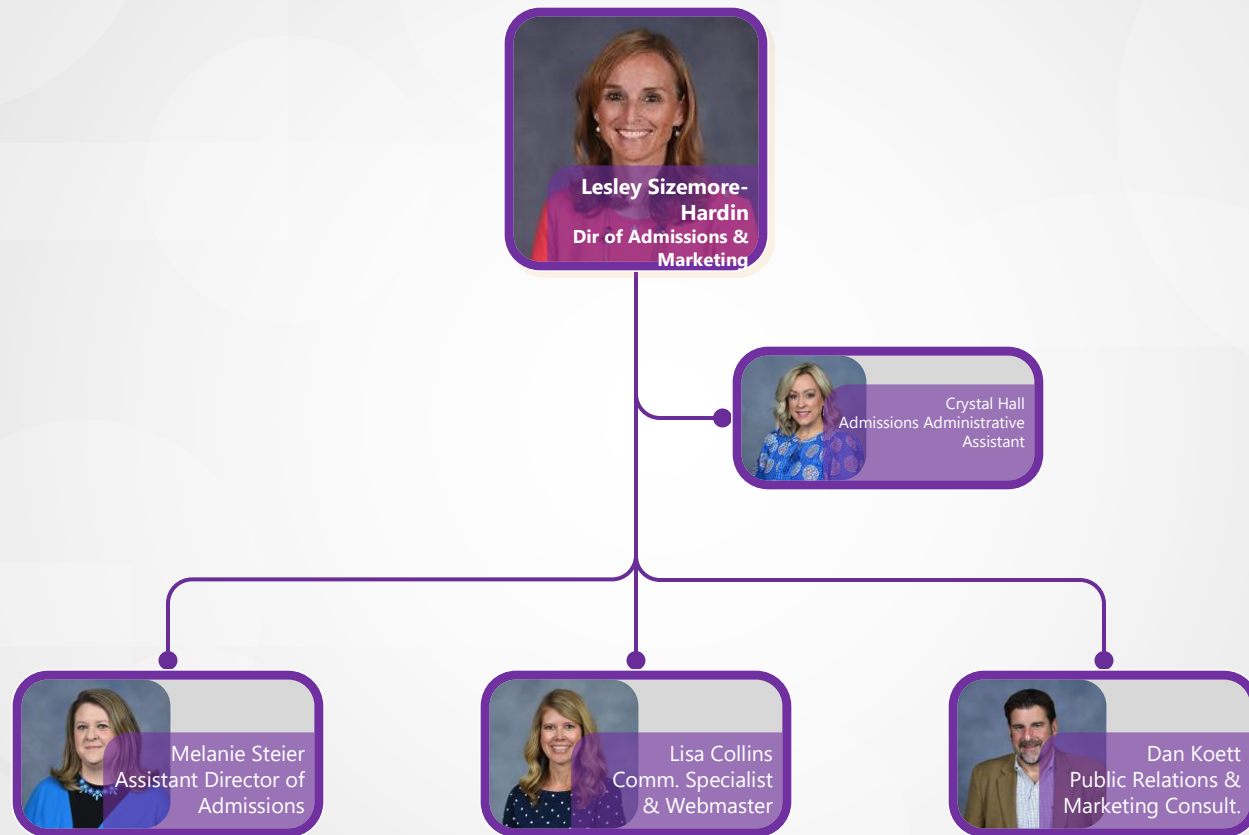
Academic – High School

Lexington Christian Academy



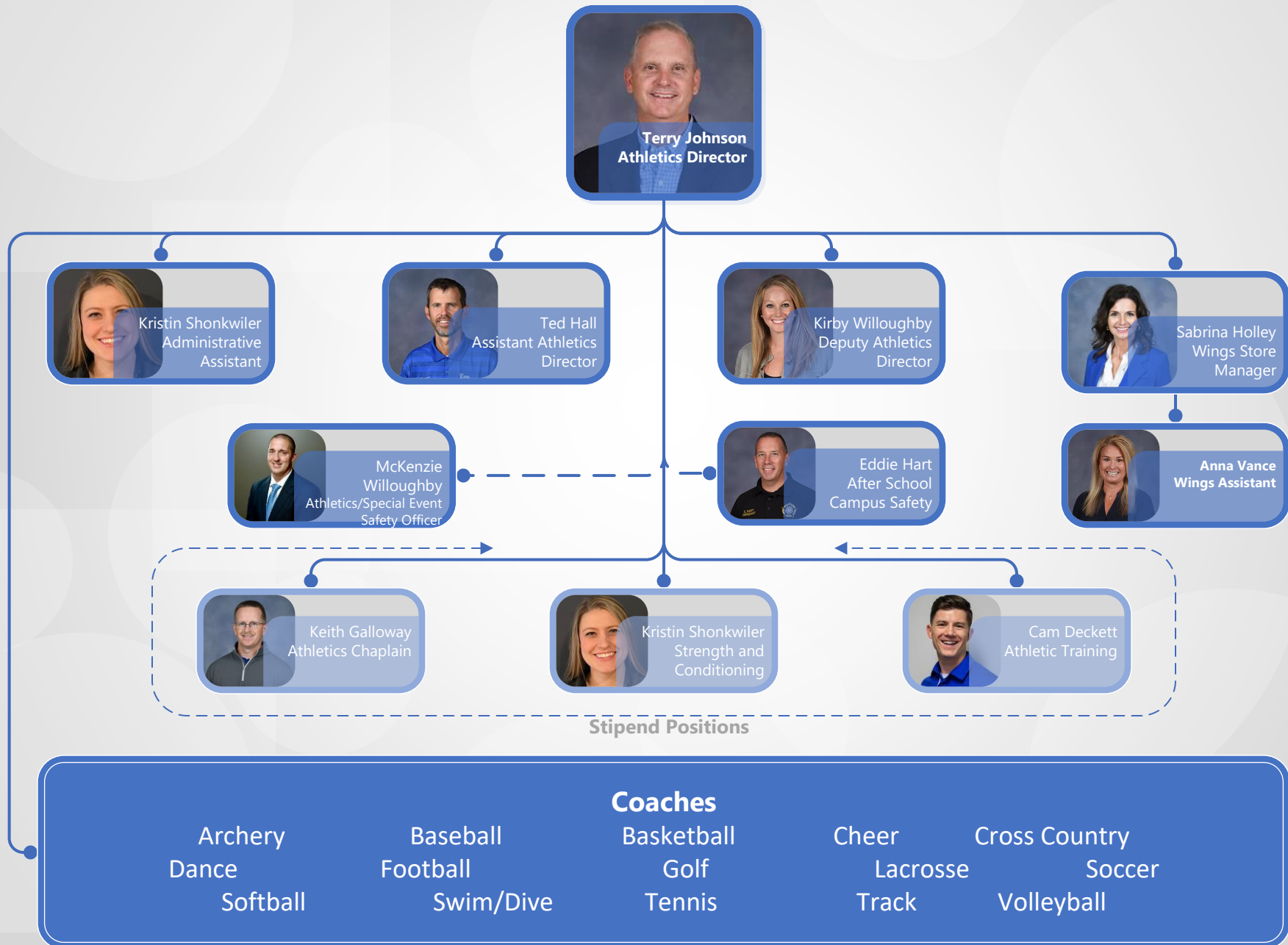
Admissions & Marketing

Lexington Christian Academy



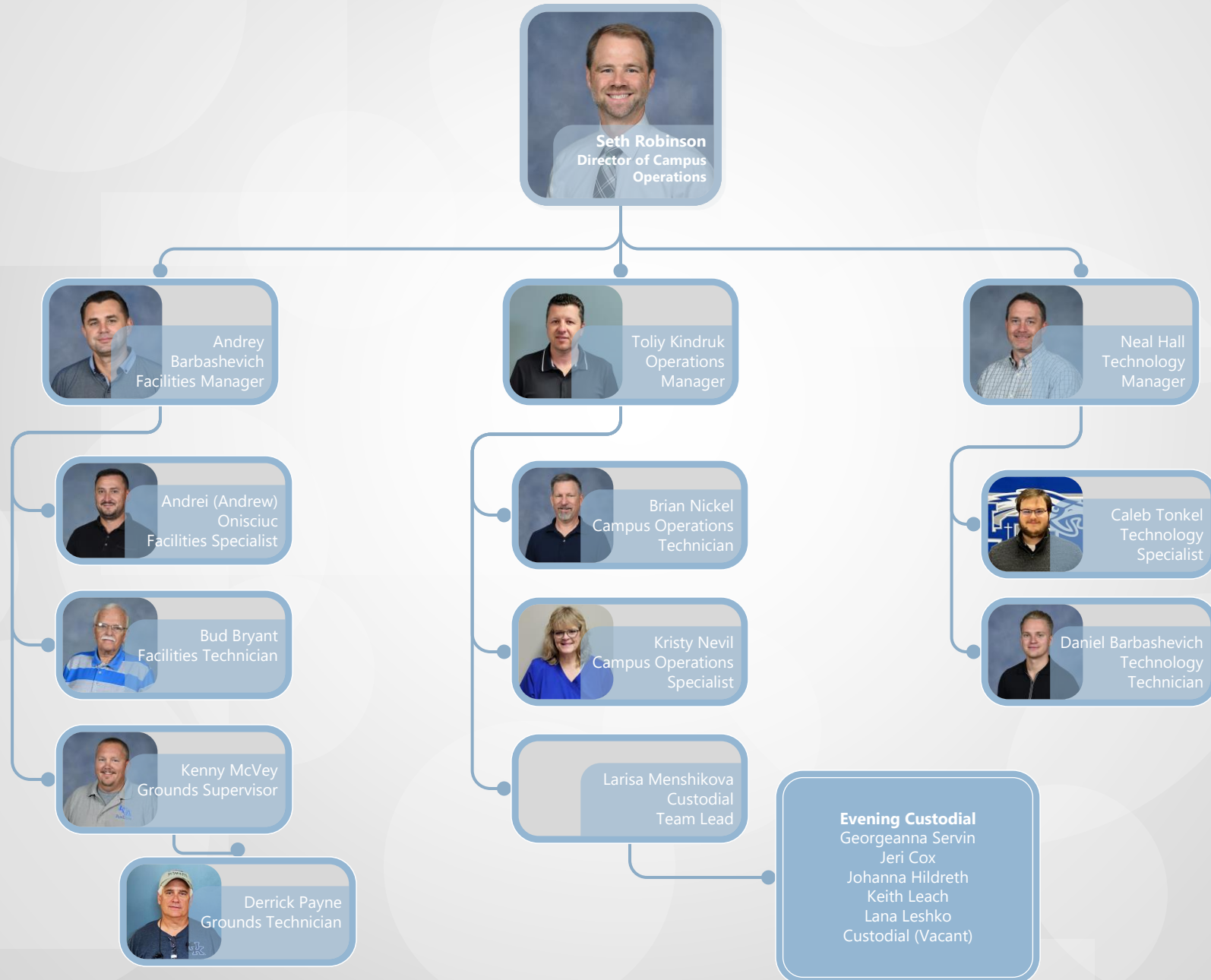
Athletics

Lexington Christian Academy



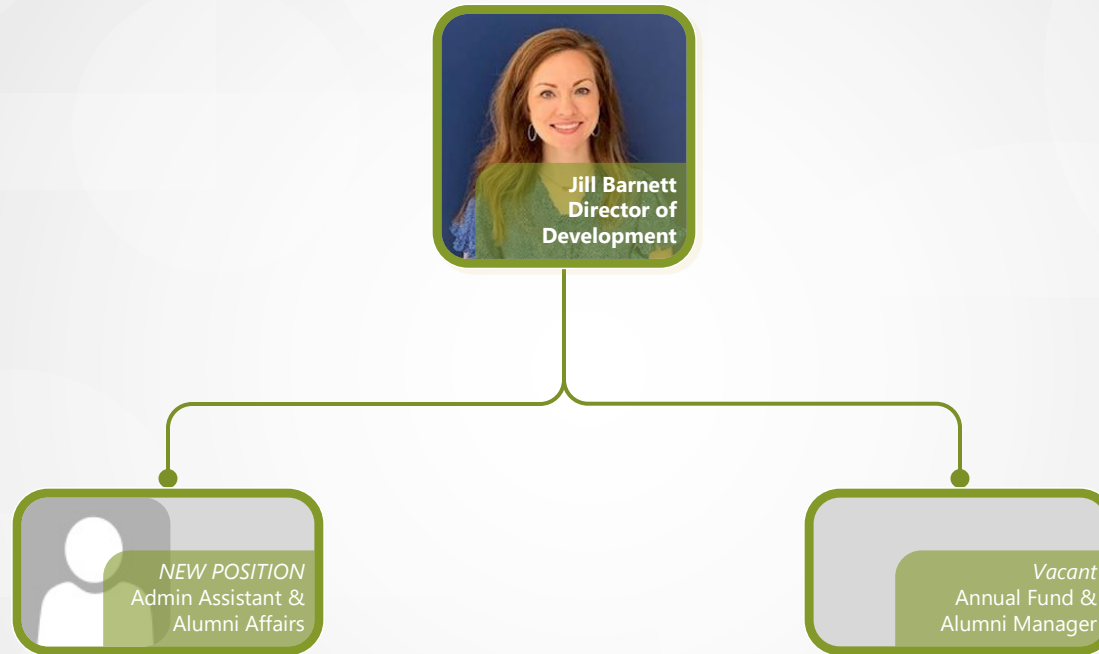
Campus Operations

Lexington Christian Academy



Development

Lexington Christian Academy



Finance & Human Resources

Lexington Christian Academy

